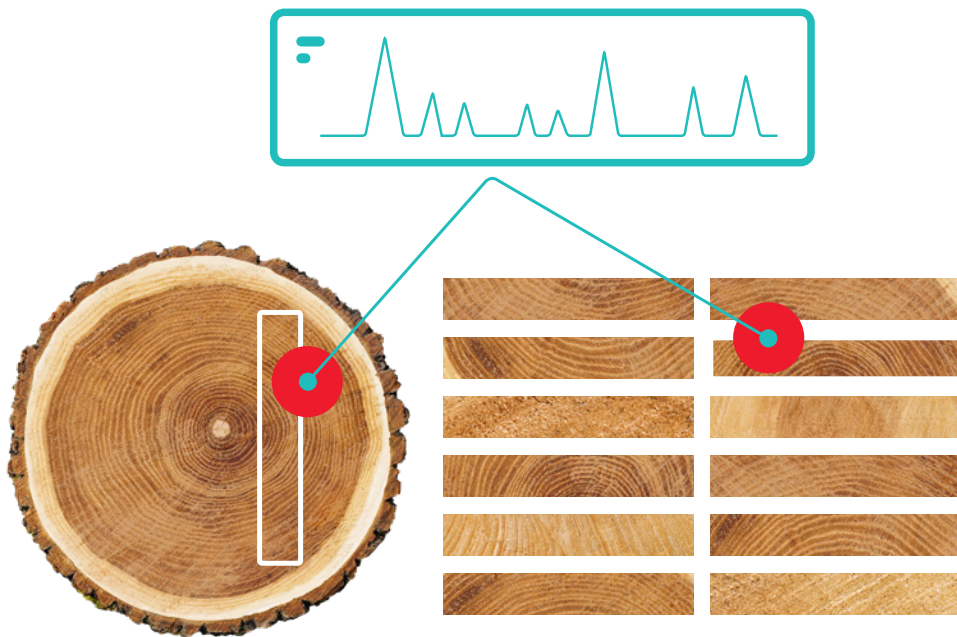


Sawmill 4.0

Digital Fingerprint

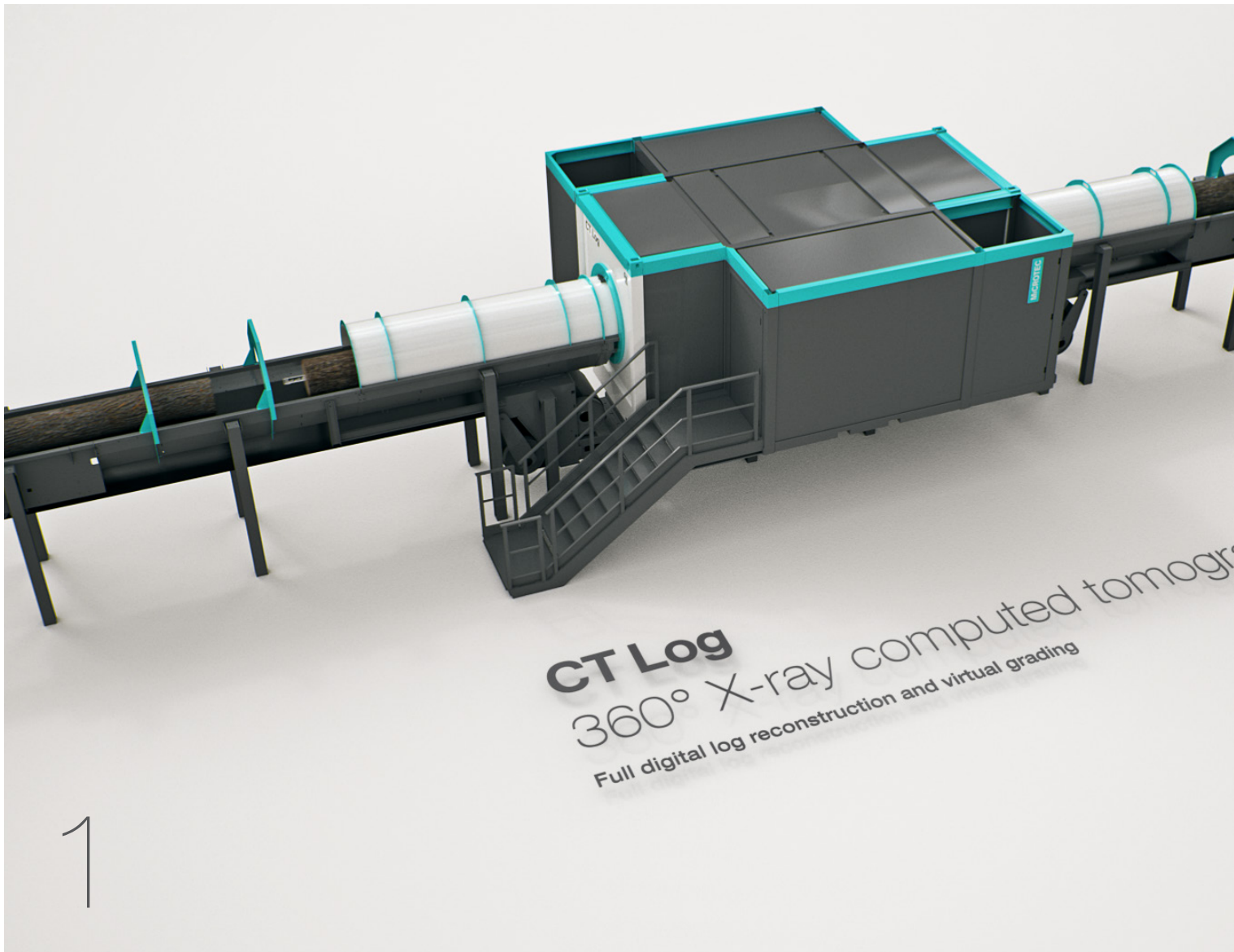
- × Gapless traceability – from log to board
- × Data & Business Intelligence



CT Log

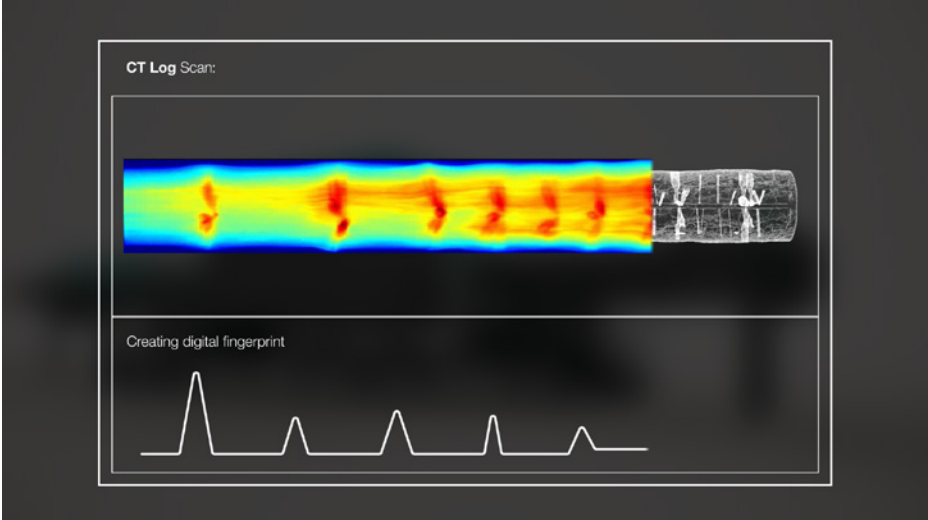
360° X-ray Computed Tomography

Complete digital 3D log reconstruction and virtual grading with generation of the optimal sawing pattern



Gapless traceability – from log to board

Through the integrated and innovative Microtec scanner and software solutions – CT Log, Logeye Fingerprint and Goldeneye 900 – and the implementation of artificial intelligence, every log can be traced to the respective boards through a "digital fingerprint". The individual boards can also be traced back to the original log.



CT Log determines the average density profile of a log, which represents its clearly identifiable "digital fingerprint".



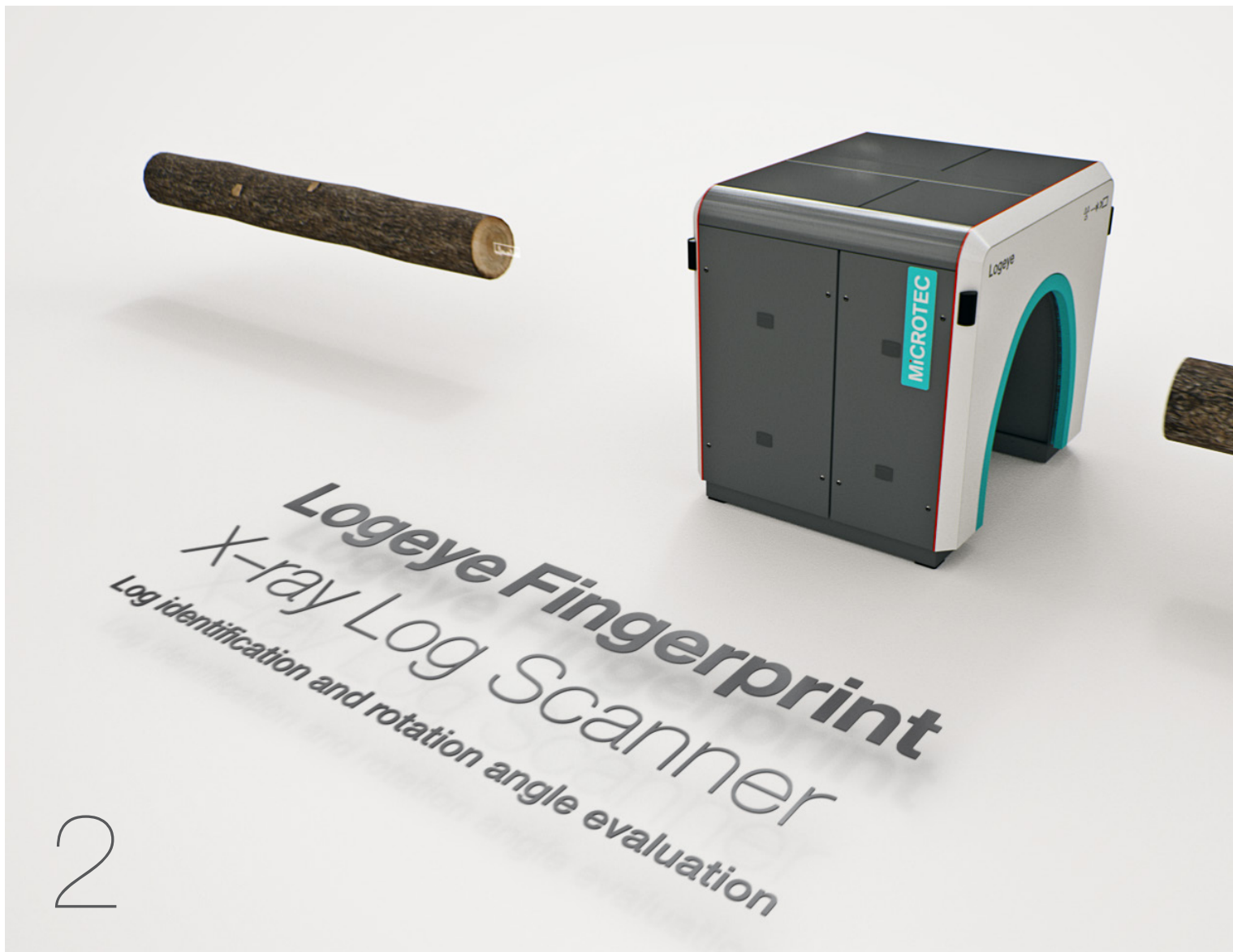
Every log stored in a pile has its "digital fingerprint" and is clearly identifiable.



Logeye Fingerprint

X-ray Log Scanner

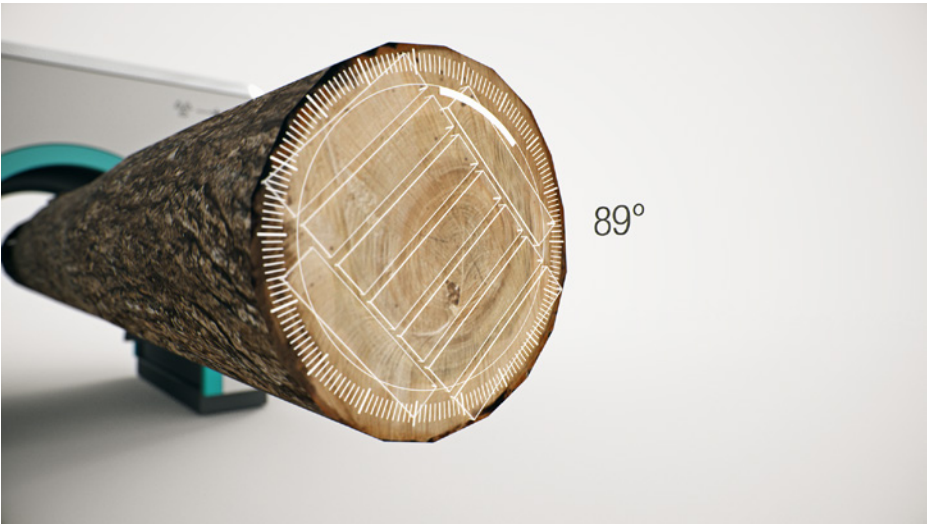
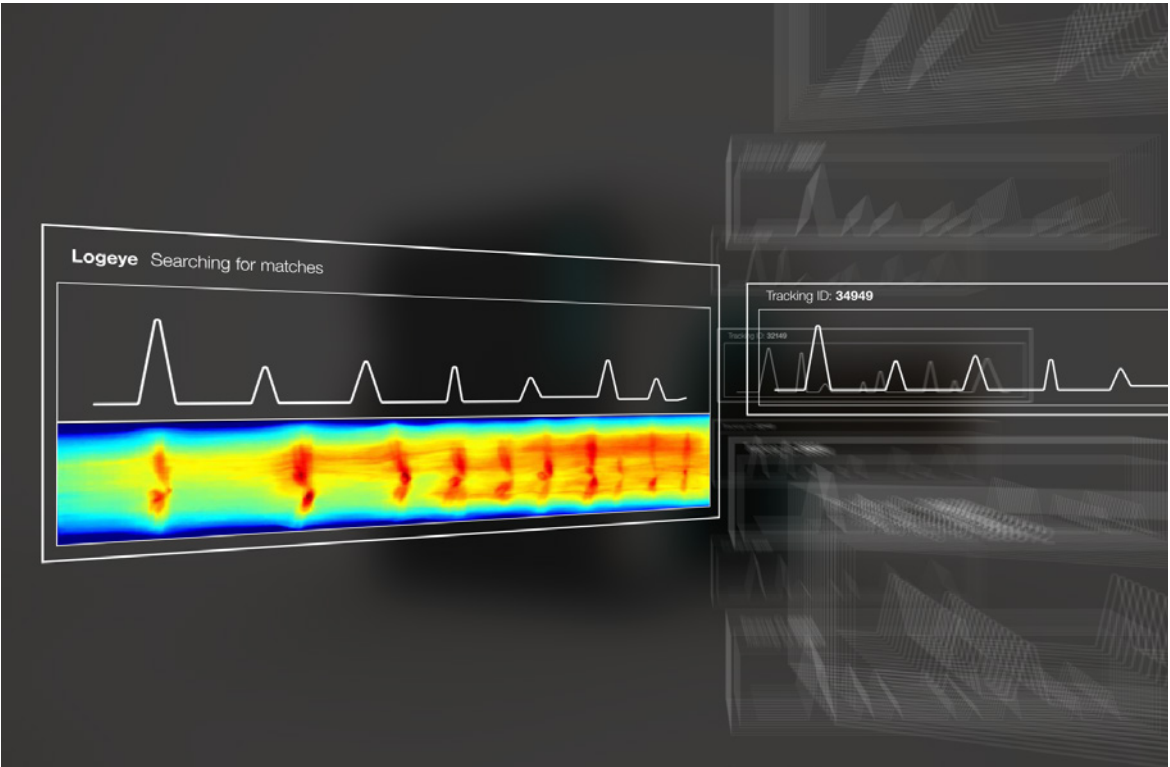
Log identification and rotation angle evaluation



Logeye Fingerprint
X-ray Log Scanner
Log identification and rotation angle evaluation

- 1
- 2
- 3

Matching:
The Logeye Finger-
print creates an X-ray
projection and com-
pares it with all X-ray
projections generated
by the CT Log.



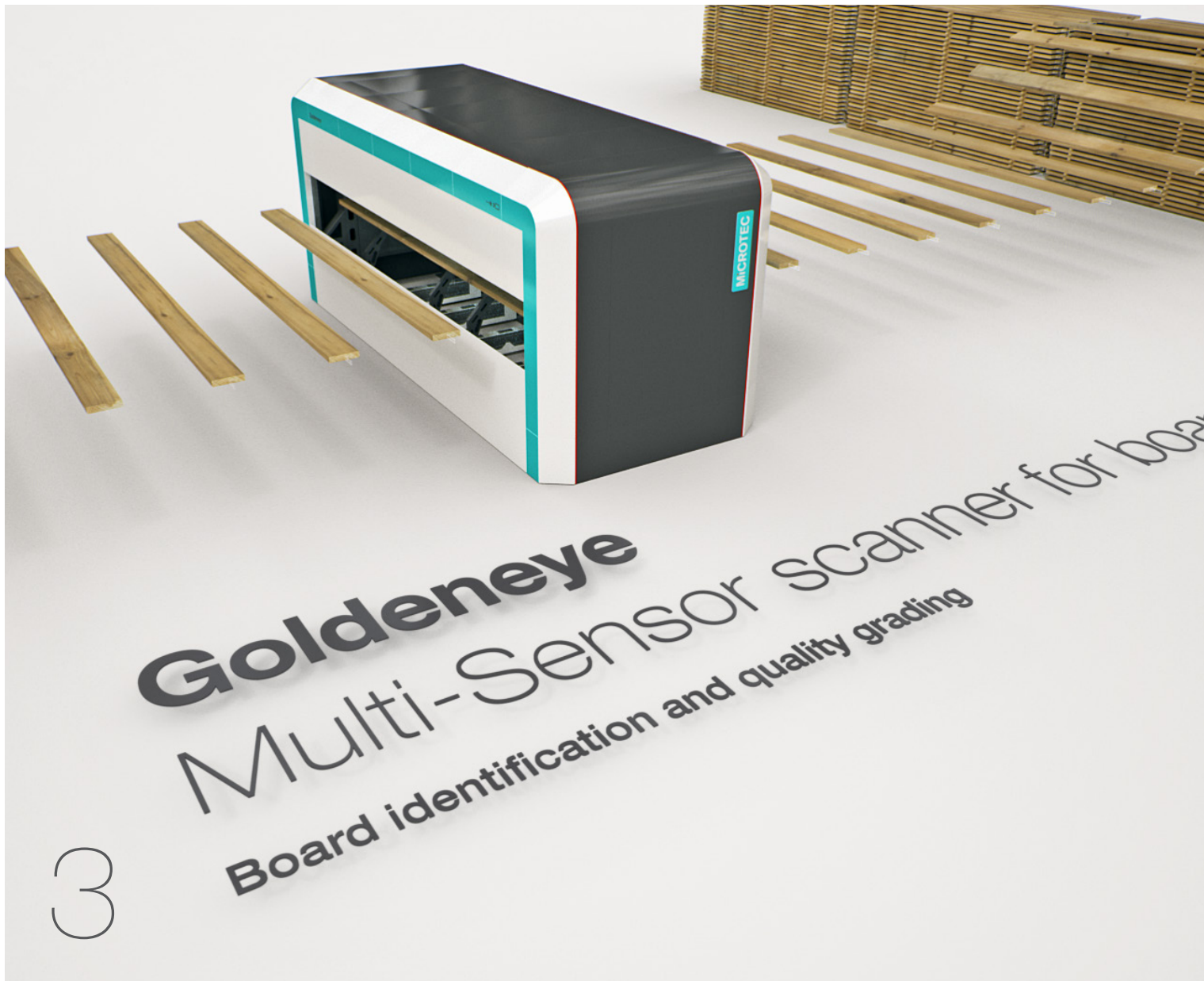
The rotation angle of the log is evaluated and thus the log can be cut precisely according to its internal characteristics.



Goldeneye 900

Multi-Sensor Quality Scanner for boards with transverse transport

Identification and quality grading of boards



Data & Business Intelligence
Management and analysis of production and quality parameters

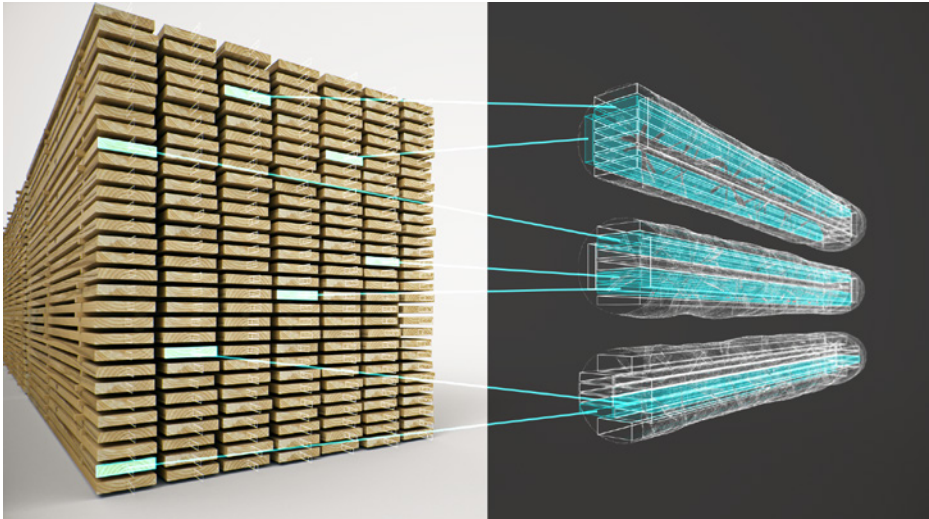
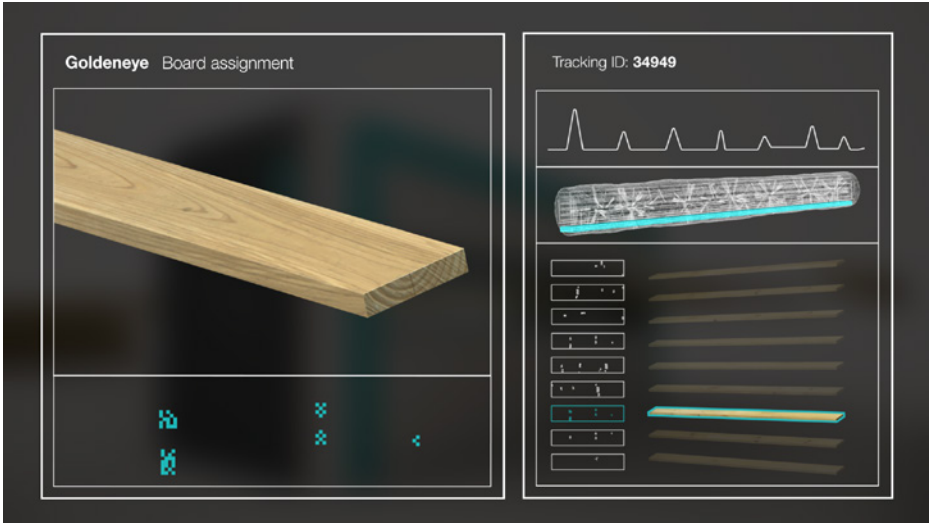
The enormous advantage of "gapless traceability" is the acquisition of relevant production and process data. This data performs an analysis and a target/actual-comparison, that means that the planned cut can be compared with the realized cut and analyzed with regard to defined production and quality parameters.

In case of deviations from these values, an immediate analysis of causes can be performed based on the available data. Production and process parameters can then be corrected and optimized accordingly in order to achieve the defined targets.

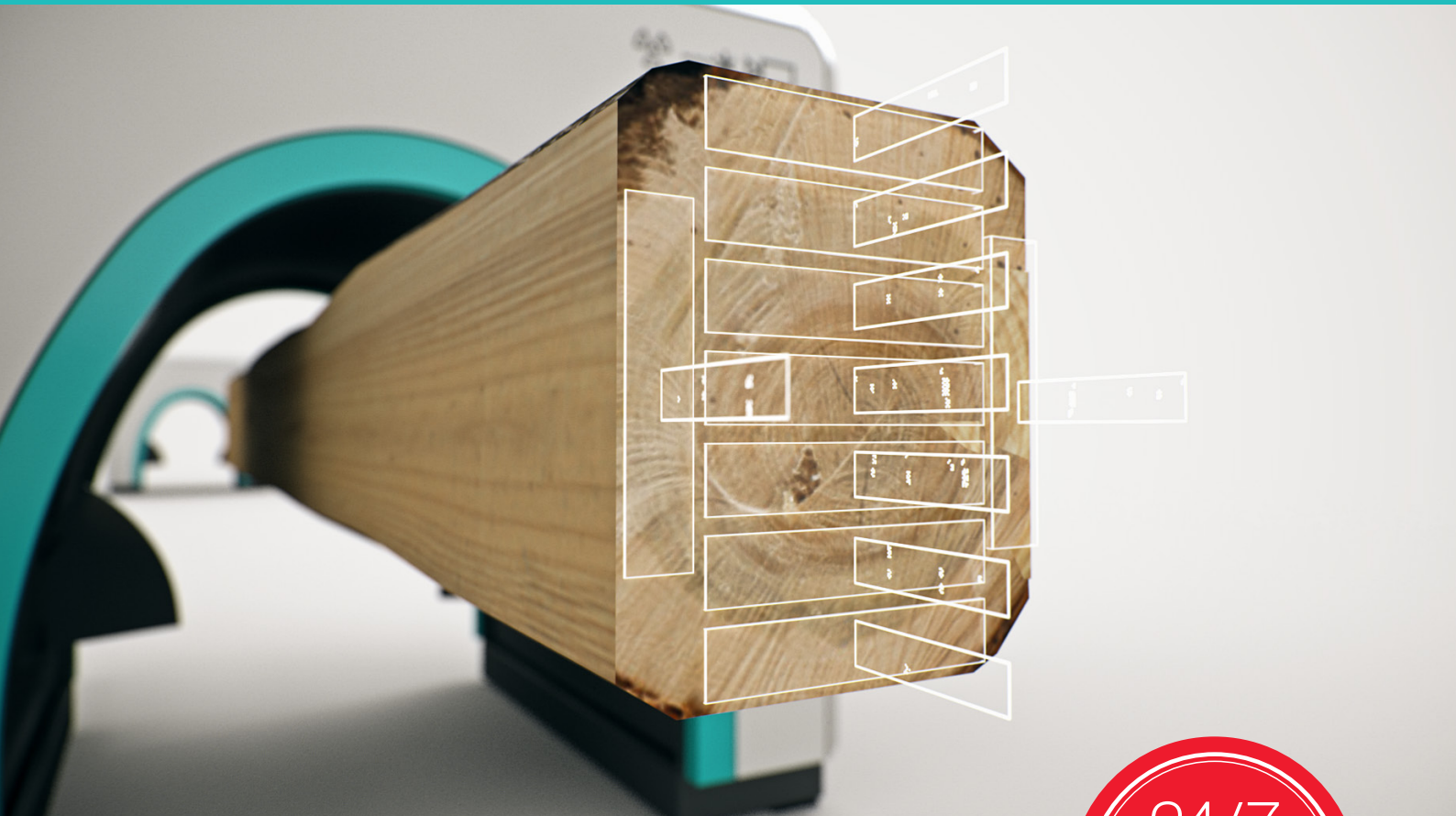
A data management of this kind enables sawmills to streamline production processes, increase productivity, and ultimately achieve a higher return on investment.



In addition to quality control, the Goldeneye 900 can also assign the board to the respective log.



Gapless traceability: At the end of the production process, each board can be traced back to its original log.



World leading wood scanning solutions



Microtec
Via Julius-Durst Straße 98
39042 Bressanone/Brixen, Italy
T + 39 0472 273 611
info@microtec.eu
microtec.eu

The information contained in this catalog may be subject to technical changes and modifications.
Design: www.farbfabrik.it
© Microtec. All rights reserved. 10/2019

